

RAPID-FIRST STEPS KENT

Data Briefing – Ongoing Assessment 2
December 9, 2022

RAPID

Stanford
University



RAPID-FSK SURVEY RESPONSES

1,641 valid responses from 1,129 parents!

- First Steps Kent landing page: 627
- Family Futures: 60
- Kent Library: 14
- Email campaign: 20
- Other/Unknown source: 395
- ELNC: 2
- Vibrant Futures: 11

Responses in Each Survey

- Initial Recruitment 1: n = 647, 4/20 -5/06
- Initial Recruitment 2: n = 361, 7/12 – 7/26
- Ongoing Assessment 1: n = 275, 7/12 – 7/27
- Initial Recruitment 3: n = 121, 10/4 – 10/20
- Ongoing Assessment 2: n = 237, 11/2 – 11/13



RAPID-FSK CURRENT PARTICIPANT DEMOGRAPHICS (N = 1,129)

Race/Ethnicity

- American Indian/Alaska Native = 1%
- Asian = 3%
- Black = 13%
- Hispanic/Latin@ = 7%
- Native Hawaiian/Pacific Islander = <1%
- White = 76%
- Other Races = <1%

Income Levels

- Below 200% FPL = 30%
- Between 200% - 400% FPL = 41%
- Above 400% FPL = 29%

Material Hardship Status

- With hardship = 54%
- No hardship = 46%

Household Structure

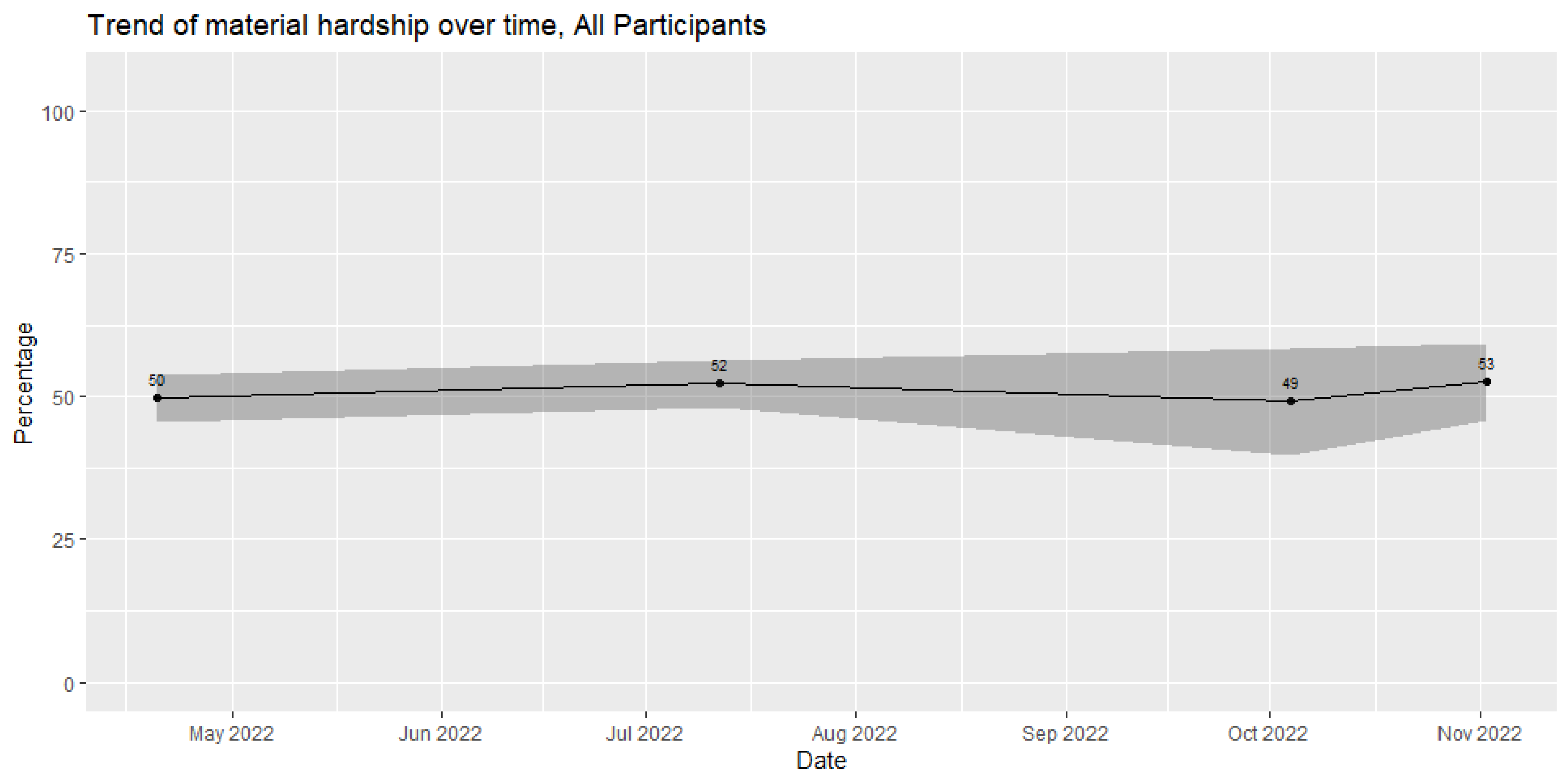
- Single-parent households = 13%
- Households of children with disabilities = 14%

Community Types

- Grand Rapids/Wyoming/Kentwood = 55%
- Southeast Kent County Communities = 5%
- Northern Kent County Communities = 21%
- Southwest Kent County Communities = 6%
- Suburb Communities = 13%

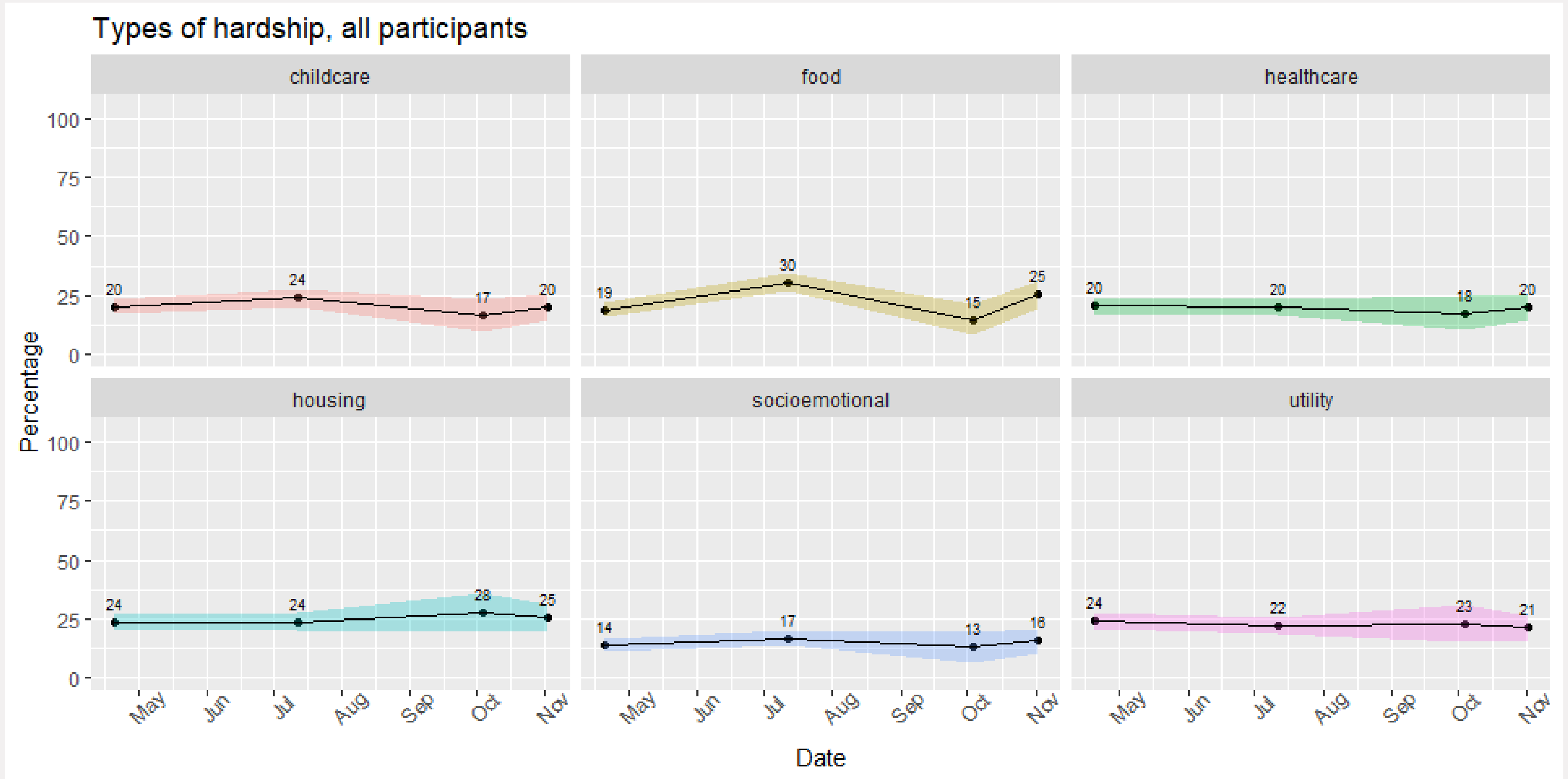
**1. FAMILIES ARE
EXPERIENCING
PERSISTENTLY HIGH
MATERIAL HARDSHIP**

RAPID-FSK SURVEY: MATERIAL HARDSHIP RATE

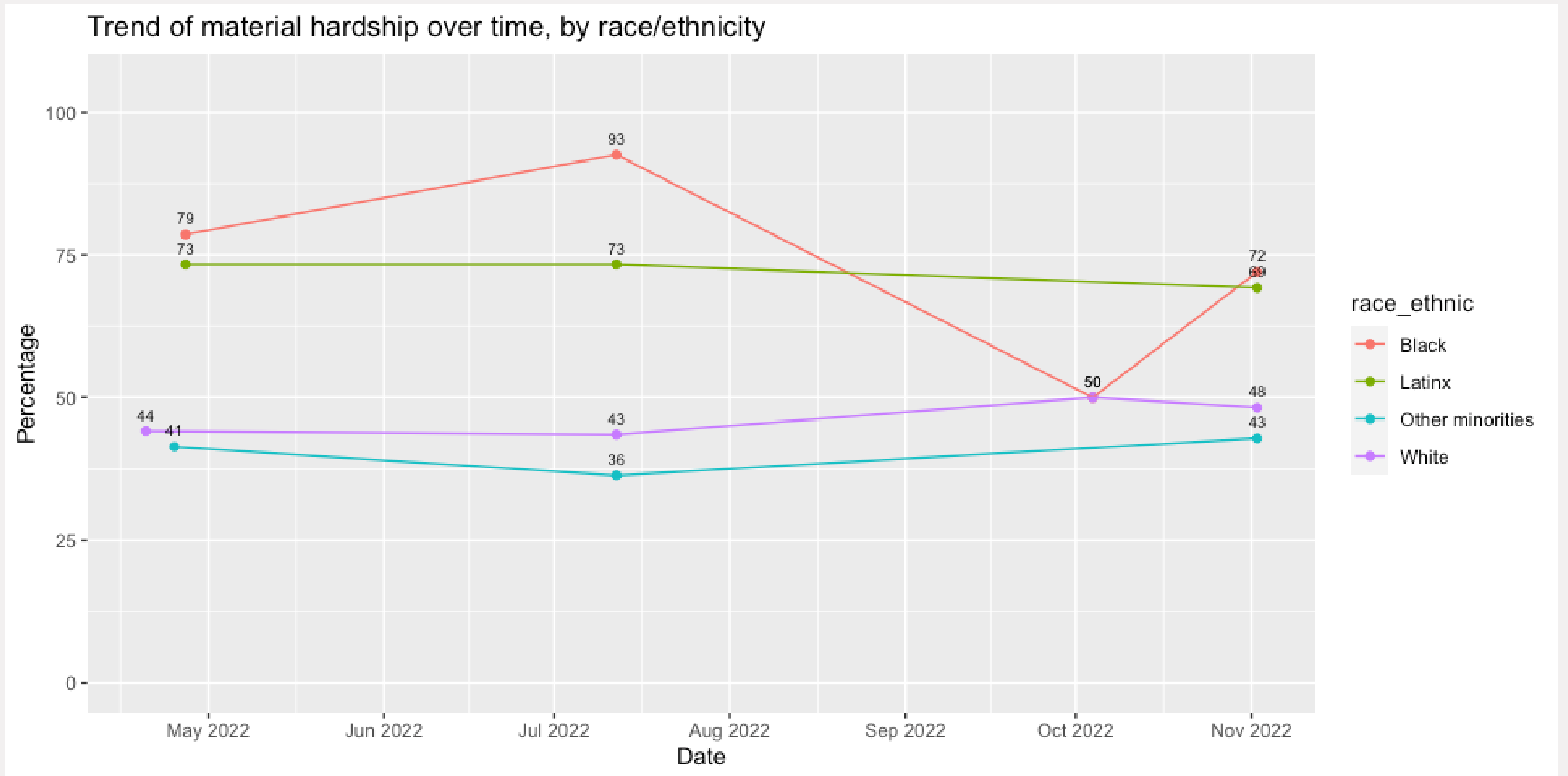


Note: Material hardship is defined as having difficulty paying for at least 1 type of basic needs among: food, housing, utilities, childcare, healthcare, and social/emotional needs.

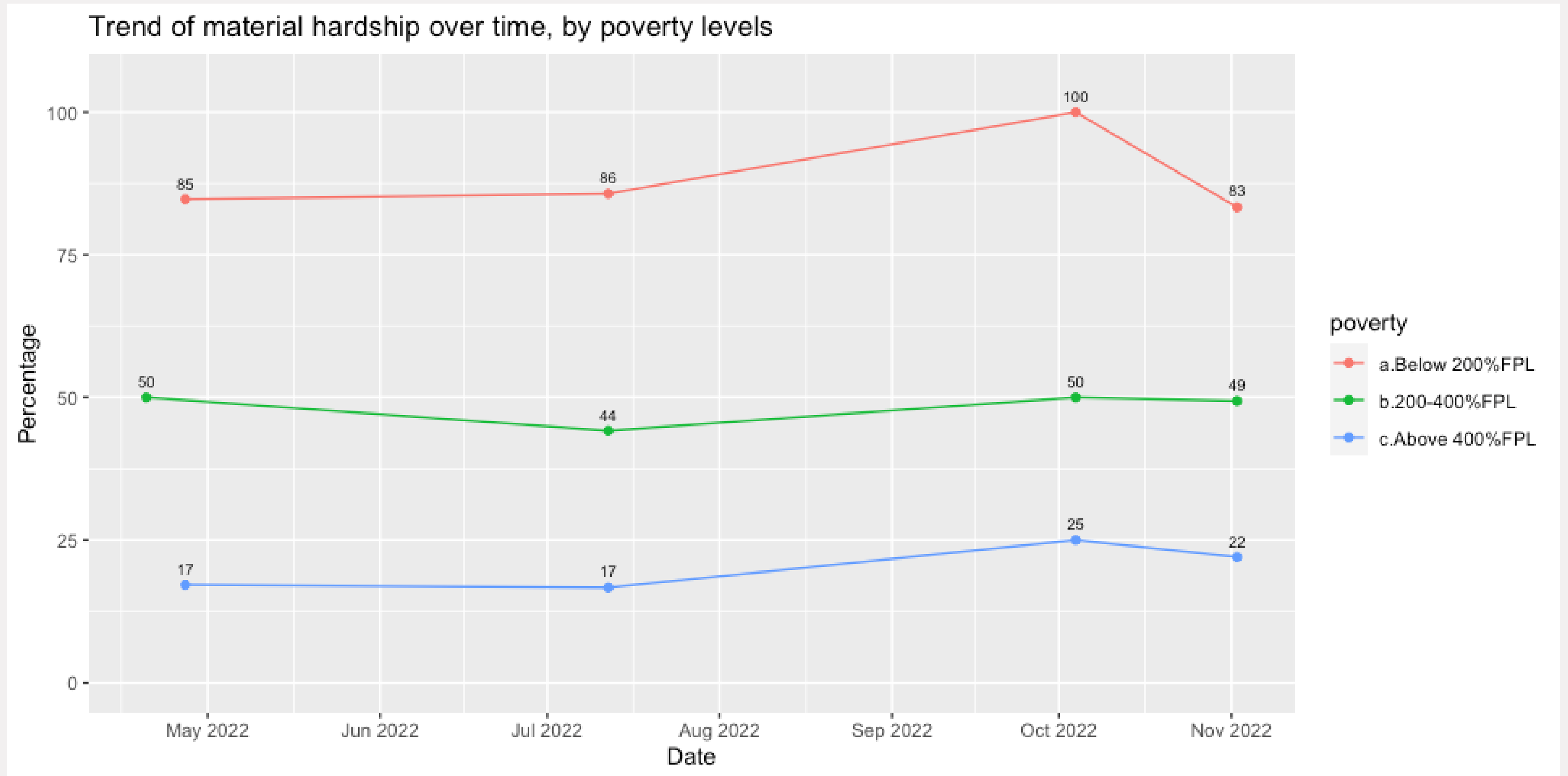
RAPID-FSK SURVEY: MATERIAL HARDSHIP TYPES



RAPID-FSK SURVEY: MATERIAL HARDSHIP RATE BY RACE/ETHNICITY

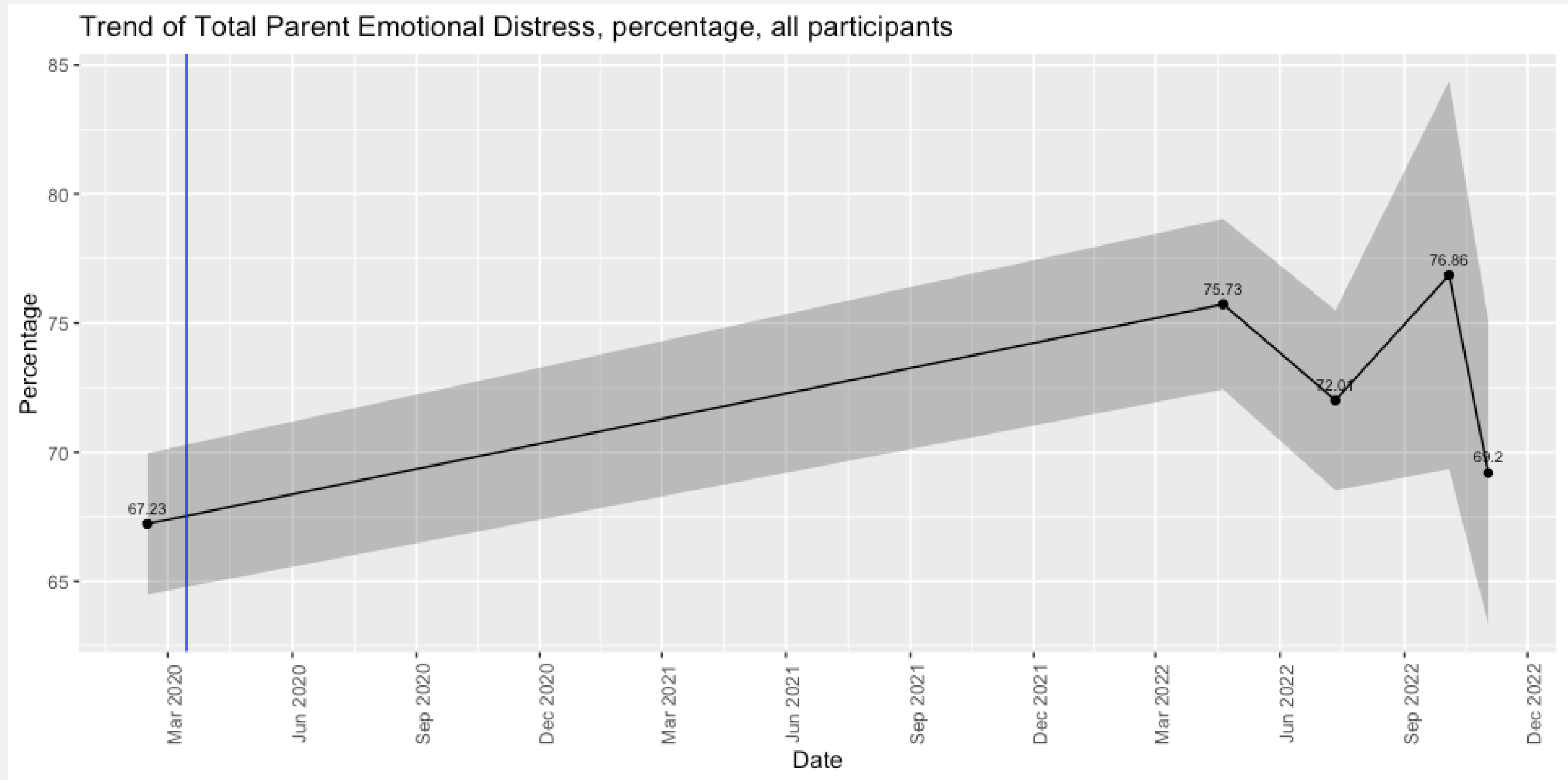


RAPID-FSK SURVEY: MATERIAL HARDSHIP RATE BY INCOME LEVELS



**2. LARGE PERCENTAGES
OF PARENTS REPORT
EMOTIONAL DISTRESS
AMONG THEMSELVES &
THEIR CHILDREN**

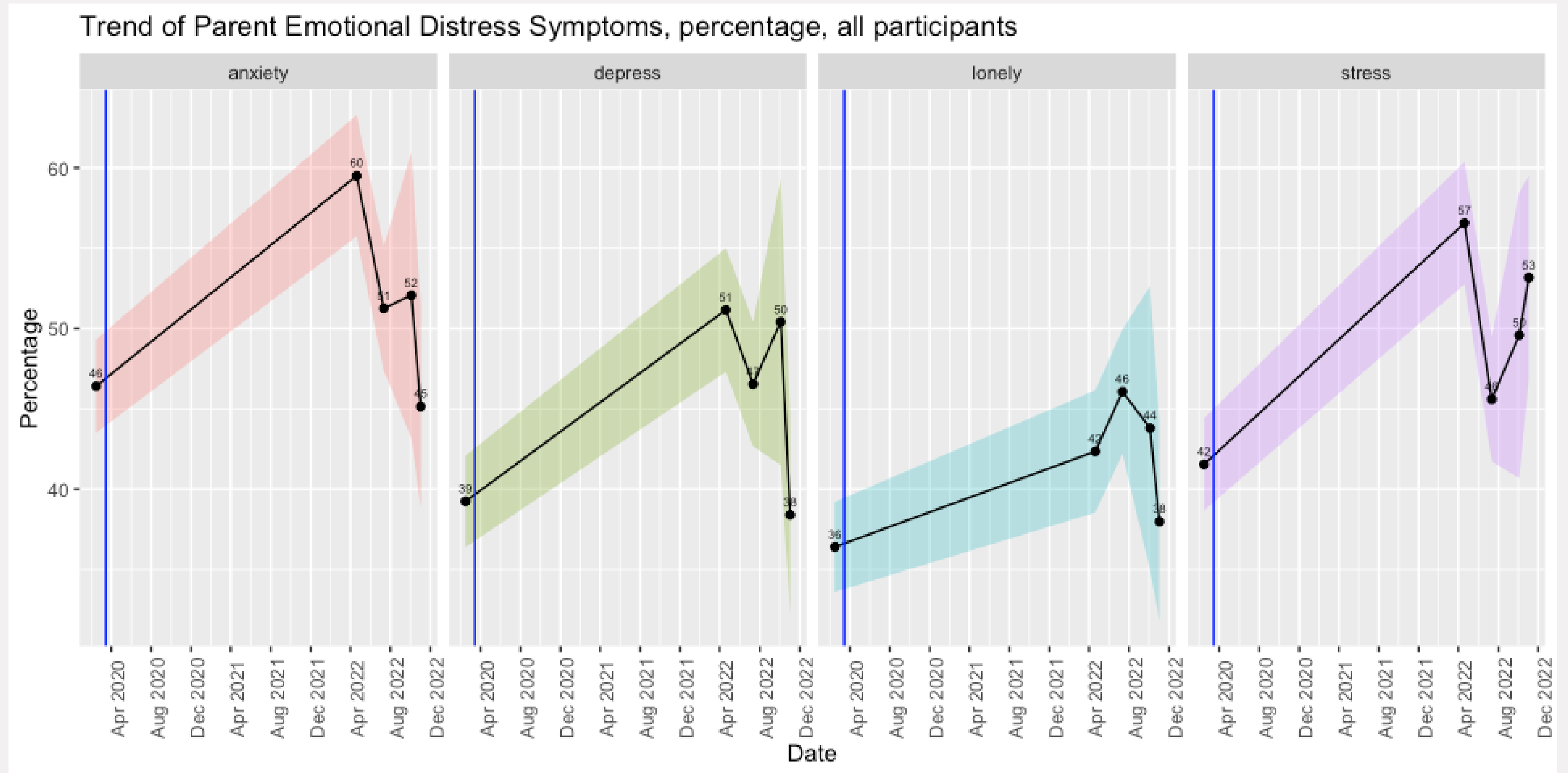
RAPID-FSK SURVEY: ADULT WELL-BEING TOTAL PERCENTAGES



Note: For the total emotional distress score, caregivers were considered as experiencing emotional distress if they reported any of the symptoms above the thresholds:

- Depressive symptoms & anxiety symptoms: selecting “Several days”, “More than half of the days”, or “Nearly every day”.
- Stress symptoms: selecting “To some extent”, “Rather much”, or “Very much”.
- Loneliness symptoms: selecting “Sometimes”, “Usually”, or “Always”.

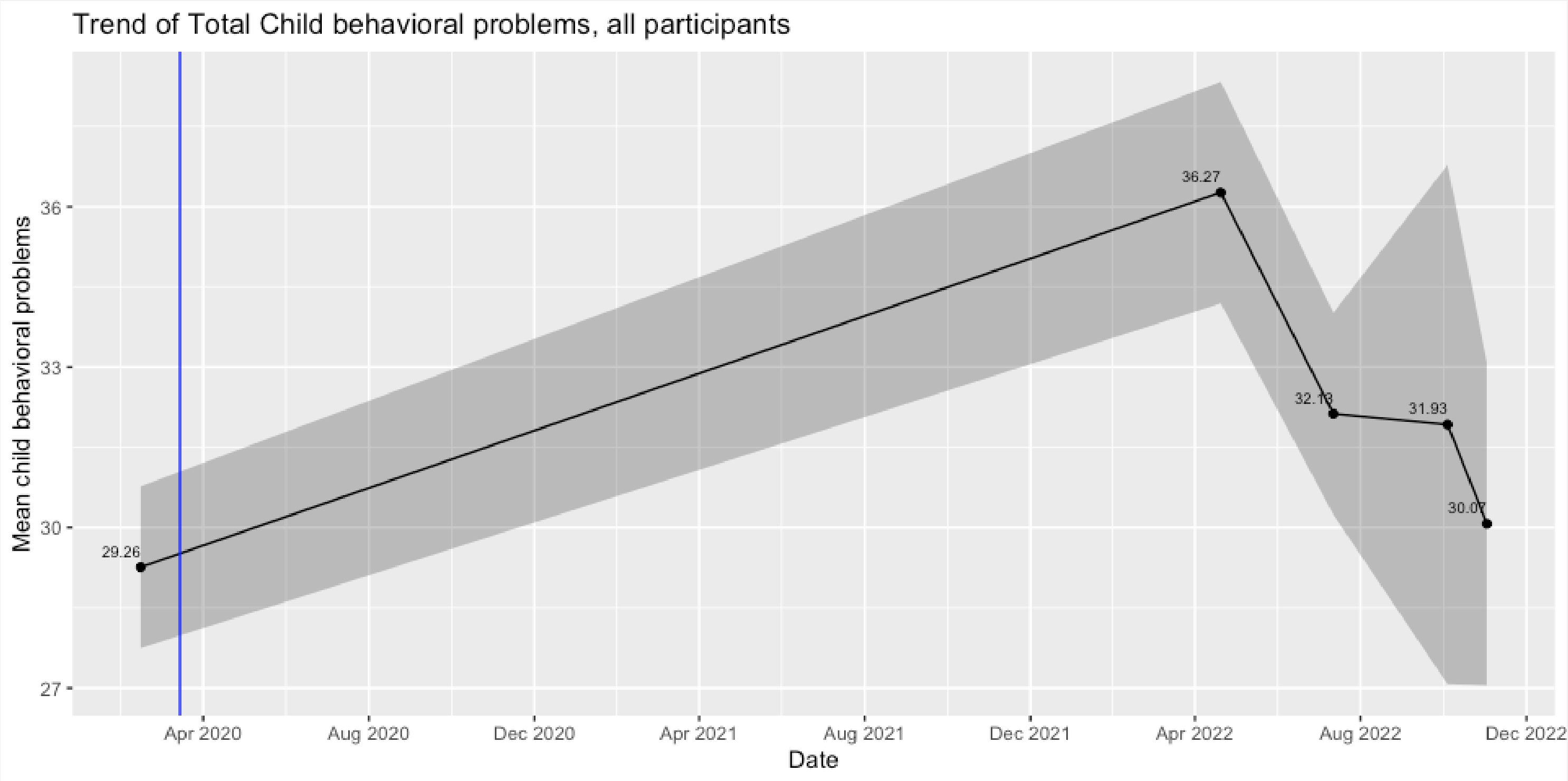
RAPID-FSK SURVEY: ADULT WELL-BEING SYMPTOMS PERCENTAGES



Note: Caregivers were considered as experiencing emotional distress if they reported the symptoms above the thresholds:

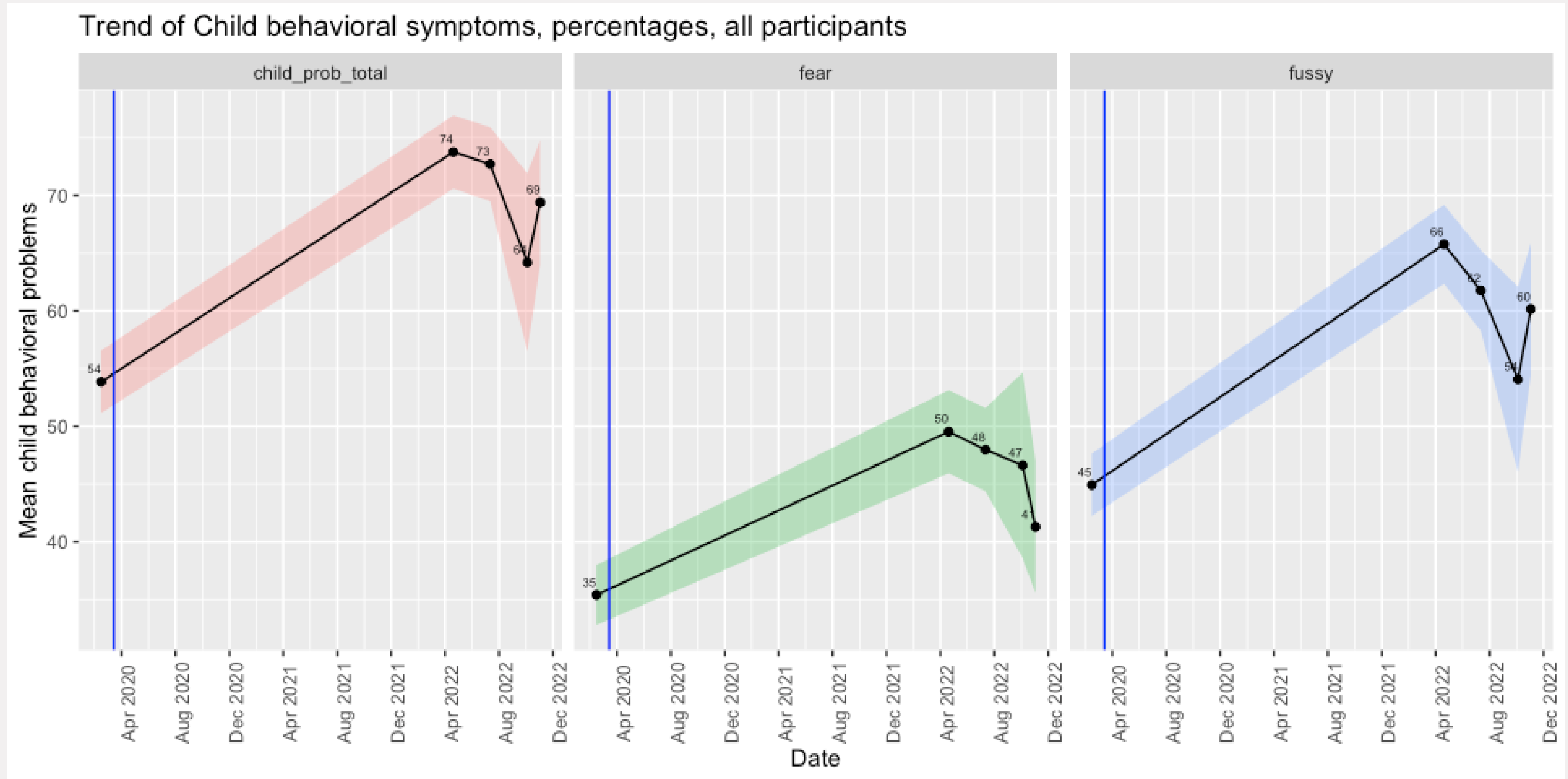
- Depressive symptoms & anxiety symptoms: selecting “Several days”, “More than half of the days”, or “Nearly every day”.
- Stress symptoms: selecting “To some extent”, “Rather much”, or “Very much”.
- Loneliness symptoms: selecting “Sometimes”, “Usually”, or “Always”.

RAPID-FSK SURVEY: CHILD WELL-BEING TOTAL MEAN SCORE



Note: Child behavioral problems was a composite score of their fussiness/defiance & fear/anxiety, with a range of 0-2. Blue line indicates the start of COVID-19. Data presented before the blue line indicated retrospectively reported pre-pandemic situations

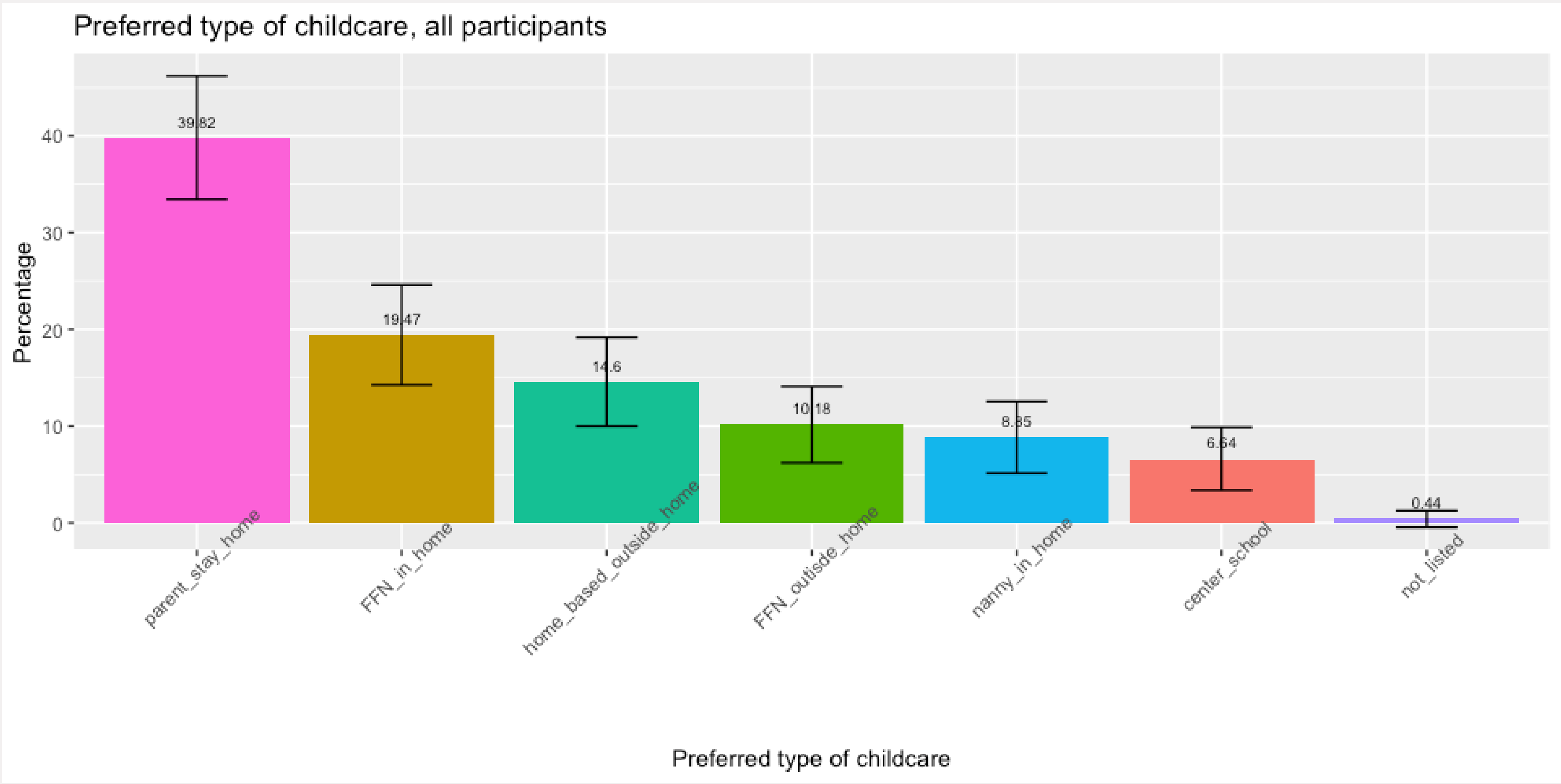
RAPID-FSK SURVEY: CHILD WELL-BEING PERCENTAGES



Note: percentage of parents reporting “sometimes/somewhat true” or “often/very true” is displayed

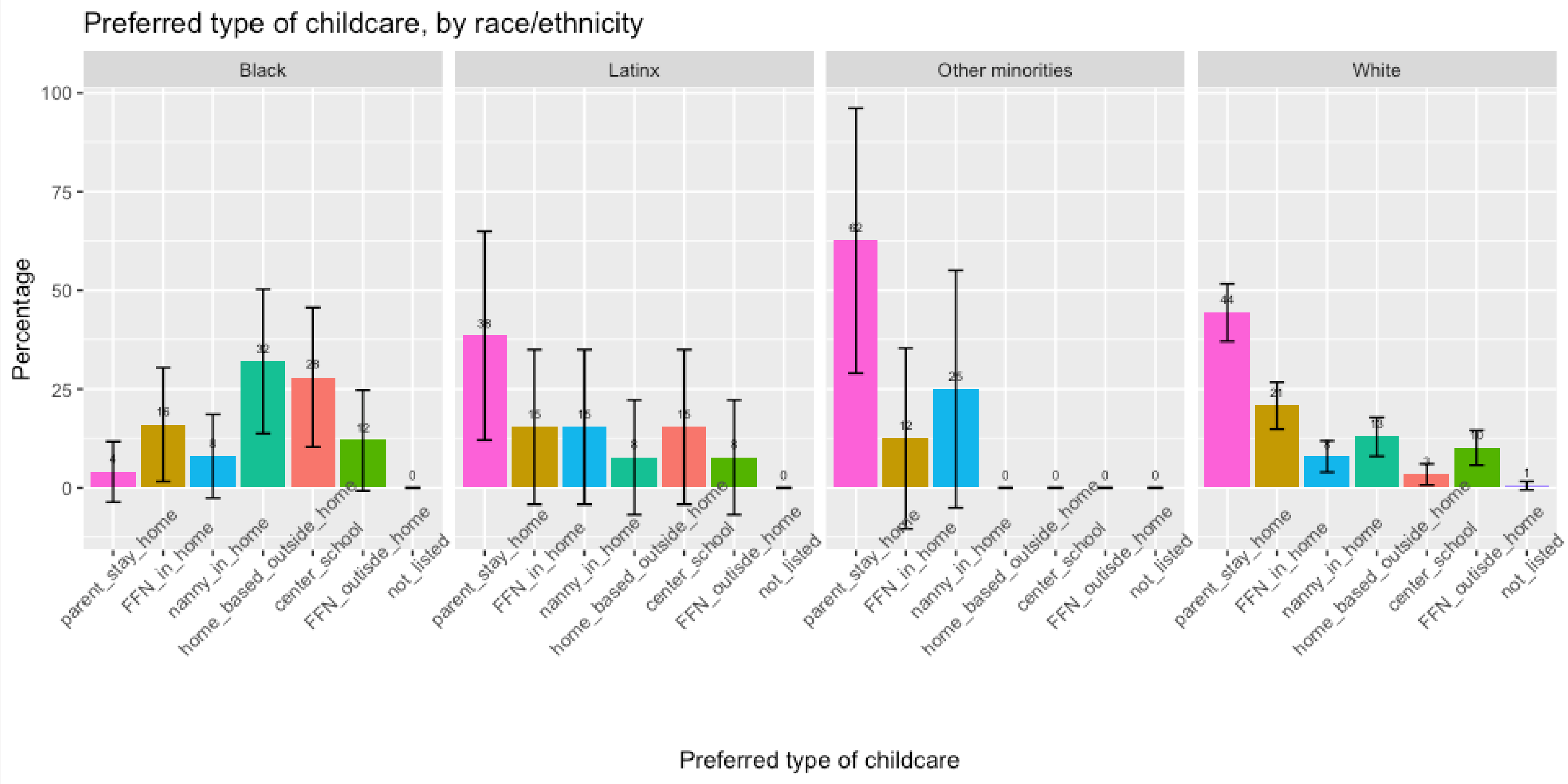
**3. PARENTS PREFER TO
STAY AT HOME AND TAKE
CARE OF THEIR
CHILDREN, BUT IT VARIES
BY RACE/ETHNICITY AND
INCOME LEVELS**

RAPID-FSK SURVEY: PREFERRED TYPE OF CHILDCARE



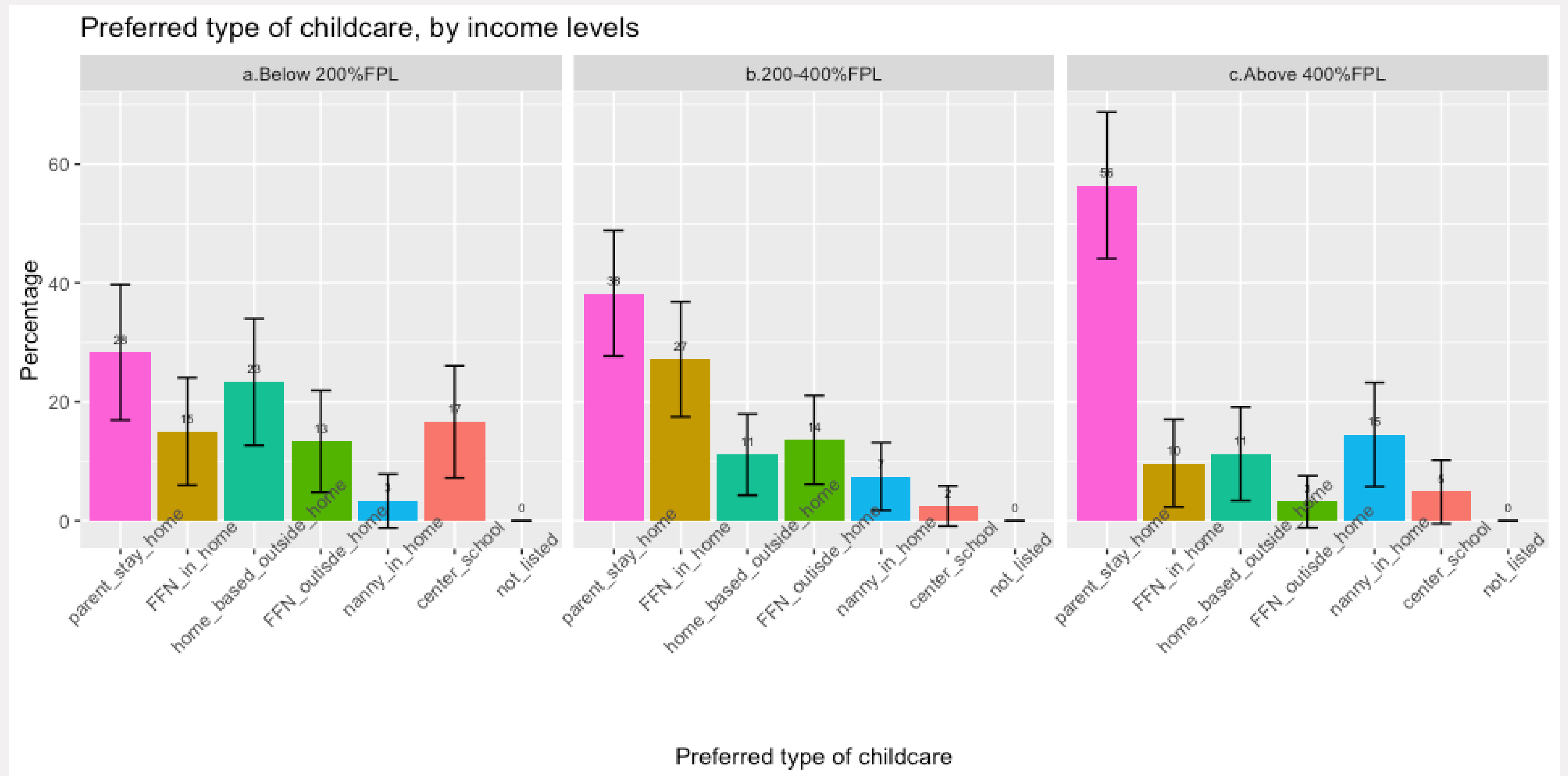
Note: Data only assessed in ongoing assessment 2 survey.

RAPID-FSK SURVEY: PREFERRED TYPE OF CHILDCARE BY RACE/ETHNICITY



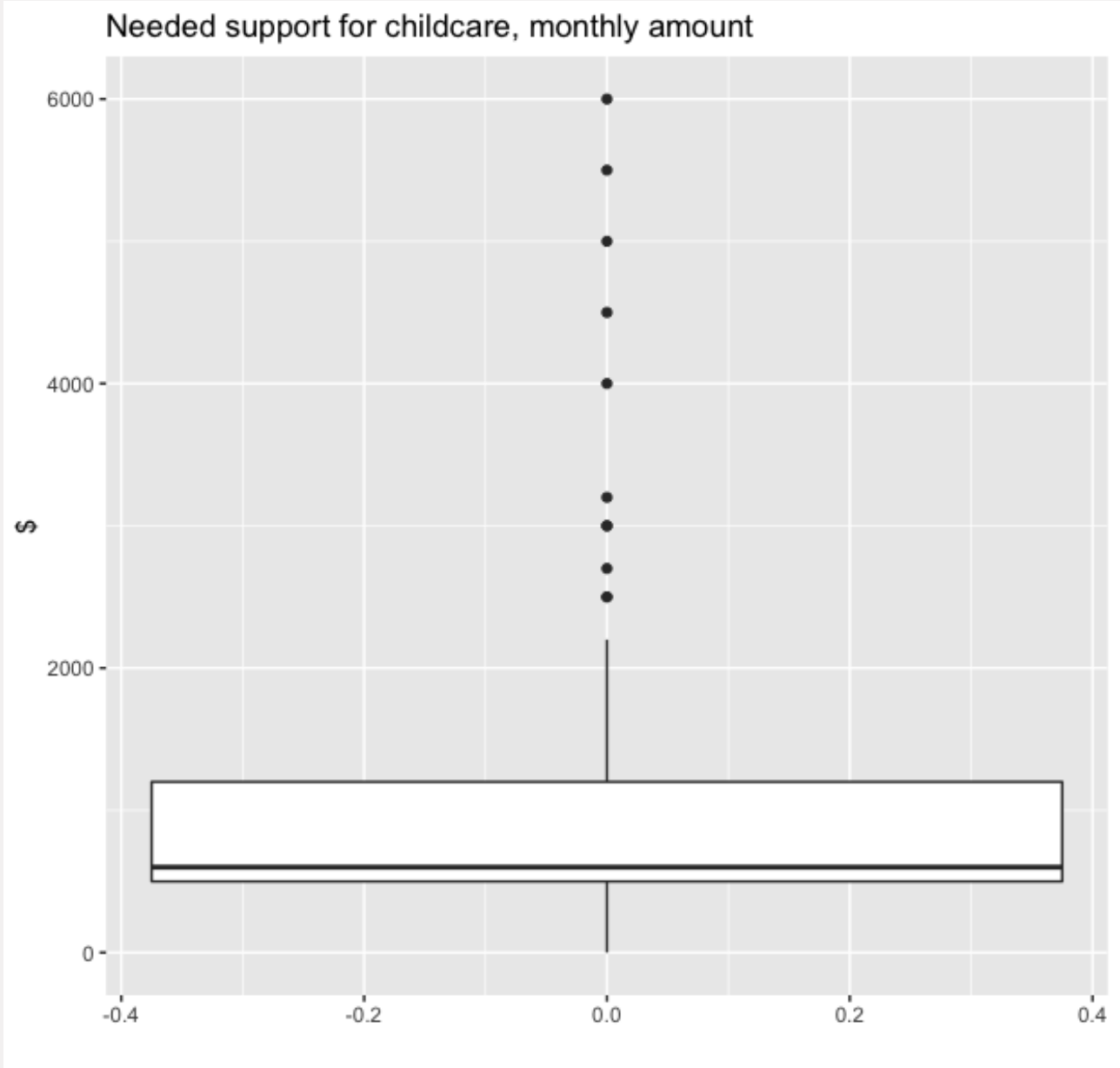
Note: Data only assessed in ongoing assessment 2 survey.

RAPID-FSK SURVEY: PREFERRED TYPE OF CHILDCARE BY INCOME LEVELS

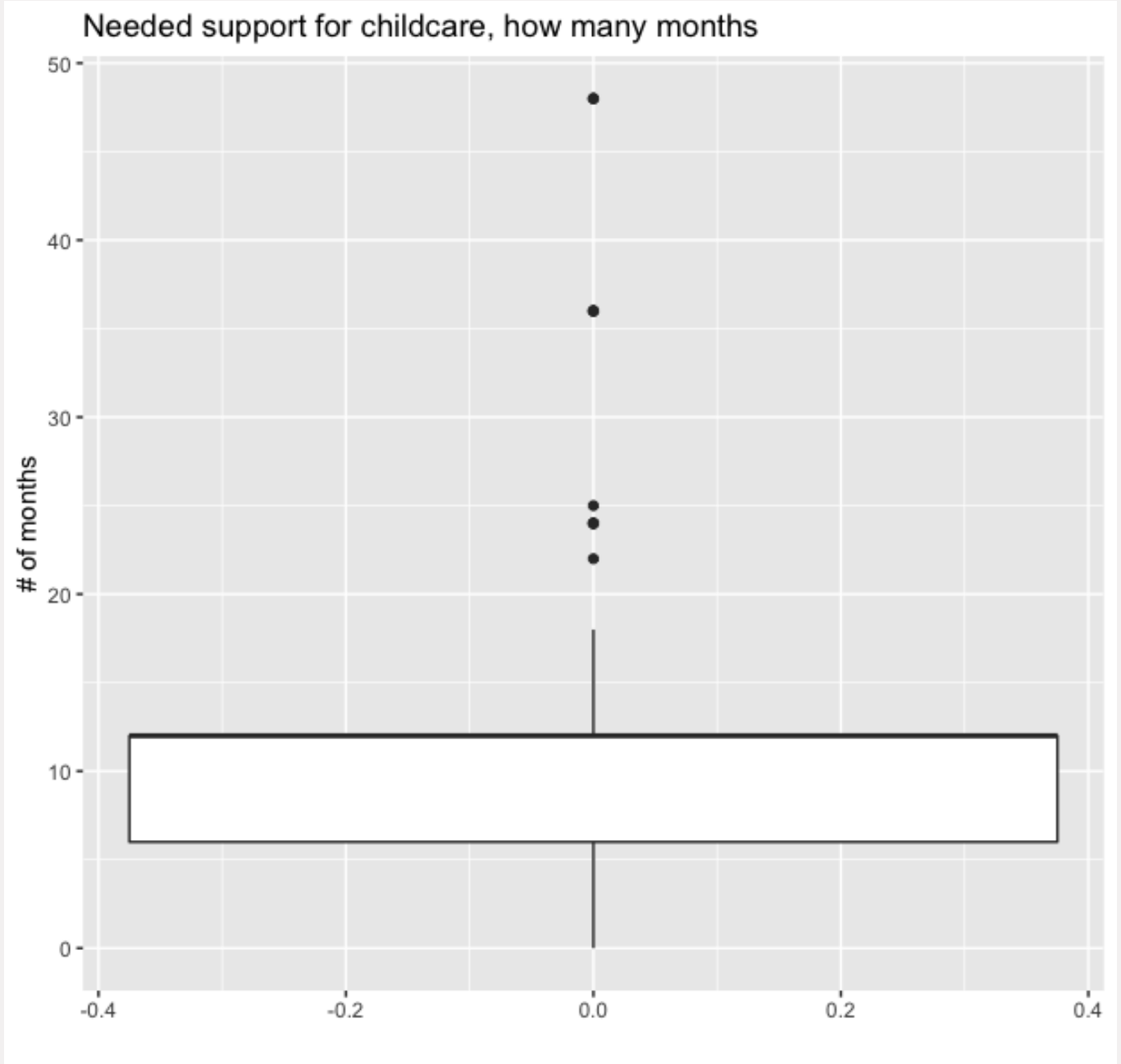


Note: Data only assessed in ongoing assessment 2 survey.

RAPID-FSK SURVEY: NEEDED MONEY SUPPORT FOR CHILDCARE



Median = \$600, Mean = \$996, SD = \$991



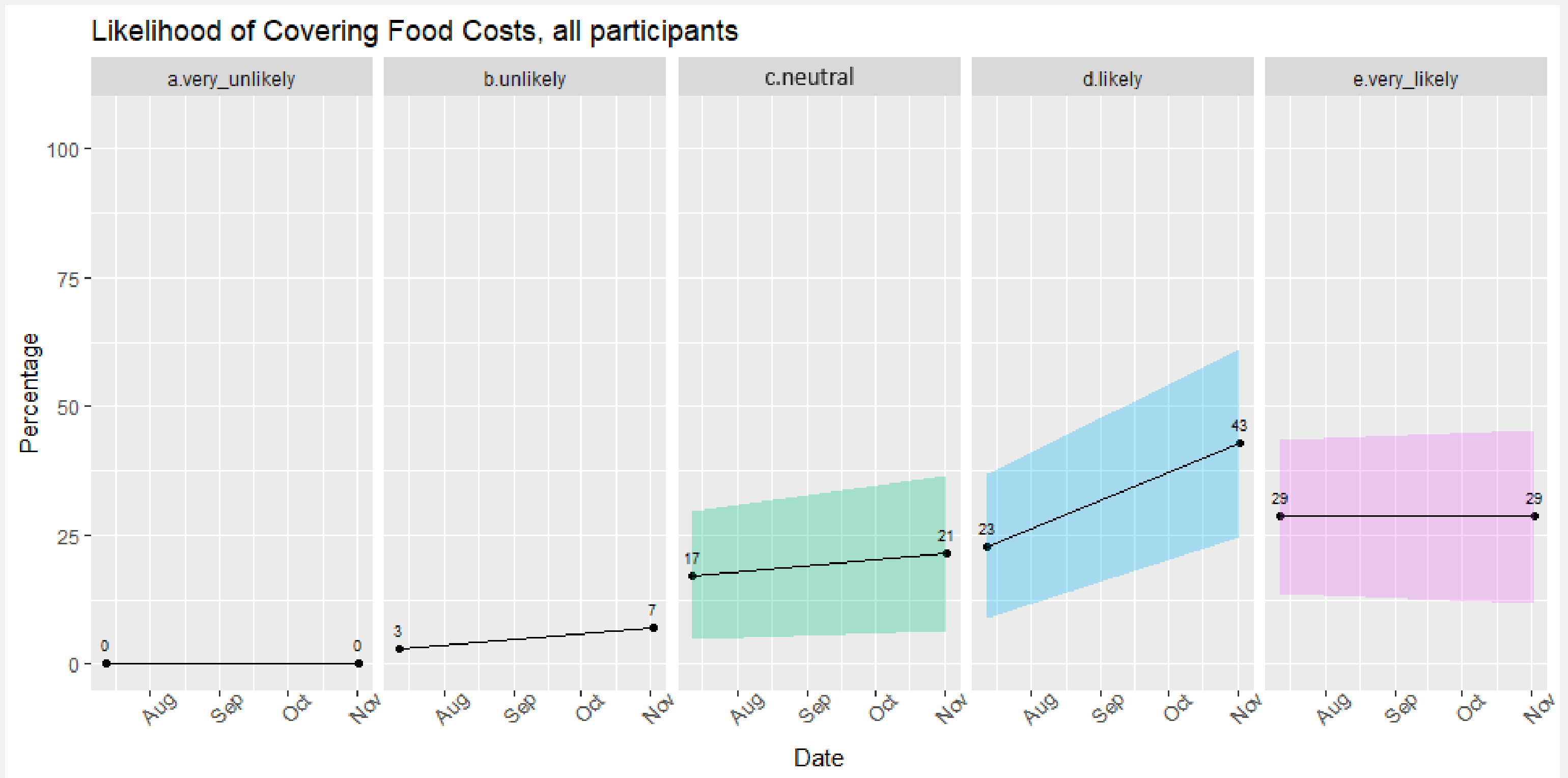
Median = 12 months

Note: Survey question: If money from Kent County was available to you to help pay for childcare, what would be the minimum amount of money you would need per month to support your ideal childcare arrangement? \$ amount per month; For how many months

Note: Data only assessed in ongoing assessment 2 survey

**4. EXISTING
SERVICE/PROGRAMS
AND NEEDED
ADDITIONAL SUPPORT**

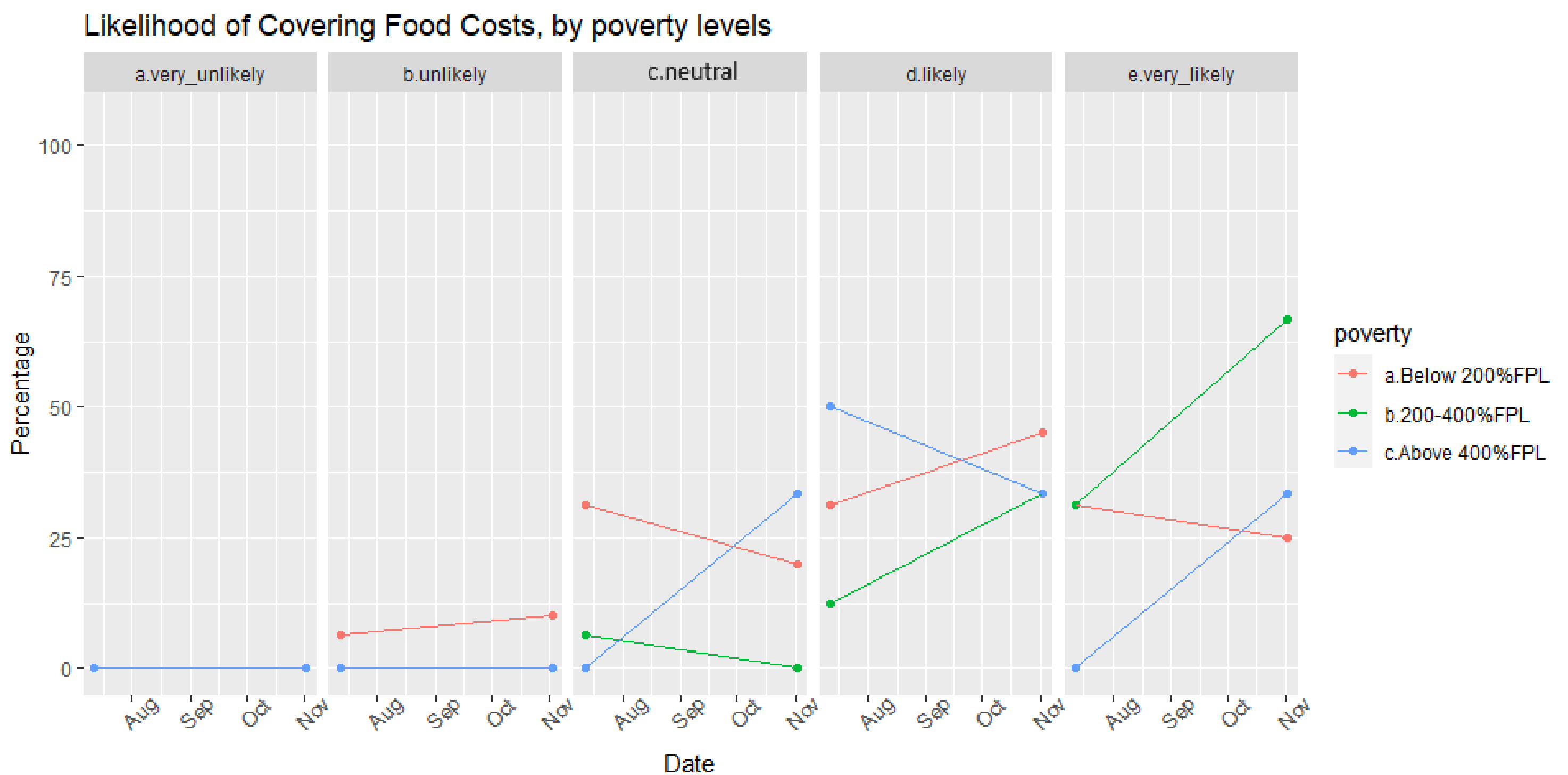
RAPID-FSK SURVEY: IMPACT OF EMERGENCY SNAP FUNDS GO AWAY



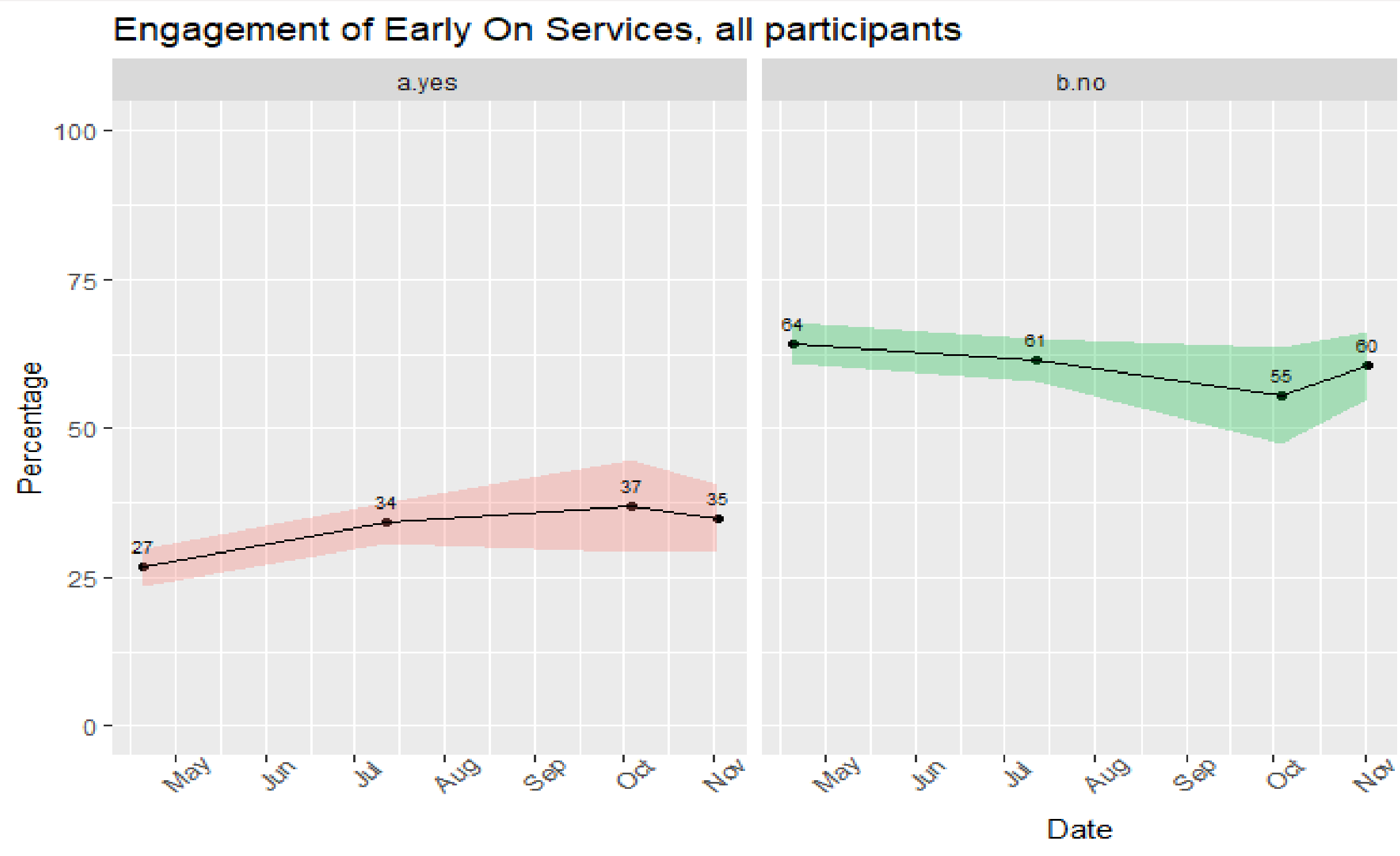
Survey question: Throughout the pandemic, families received an extra \$95 in emergency allotments for food each month added to their MI Bridge Card. The extra emergency funds in SNAP benefits are only approved through October 2022. If these emergency funds for food go away, how likely is it that you will be able to cover food costs in September/December?

Note: Question only asked in the two ongoing assessment surveys. RAPID updated time frames as emergency funds were extended.

RAPID-FSK SURVEY: IMPACT OF EMERGENCY SNAP FUNDS GO AWAY BY INCOME LEVELS

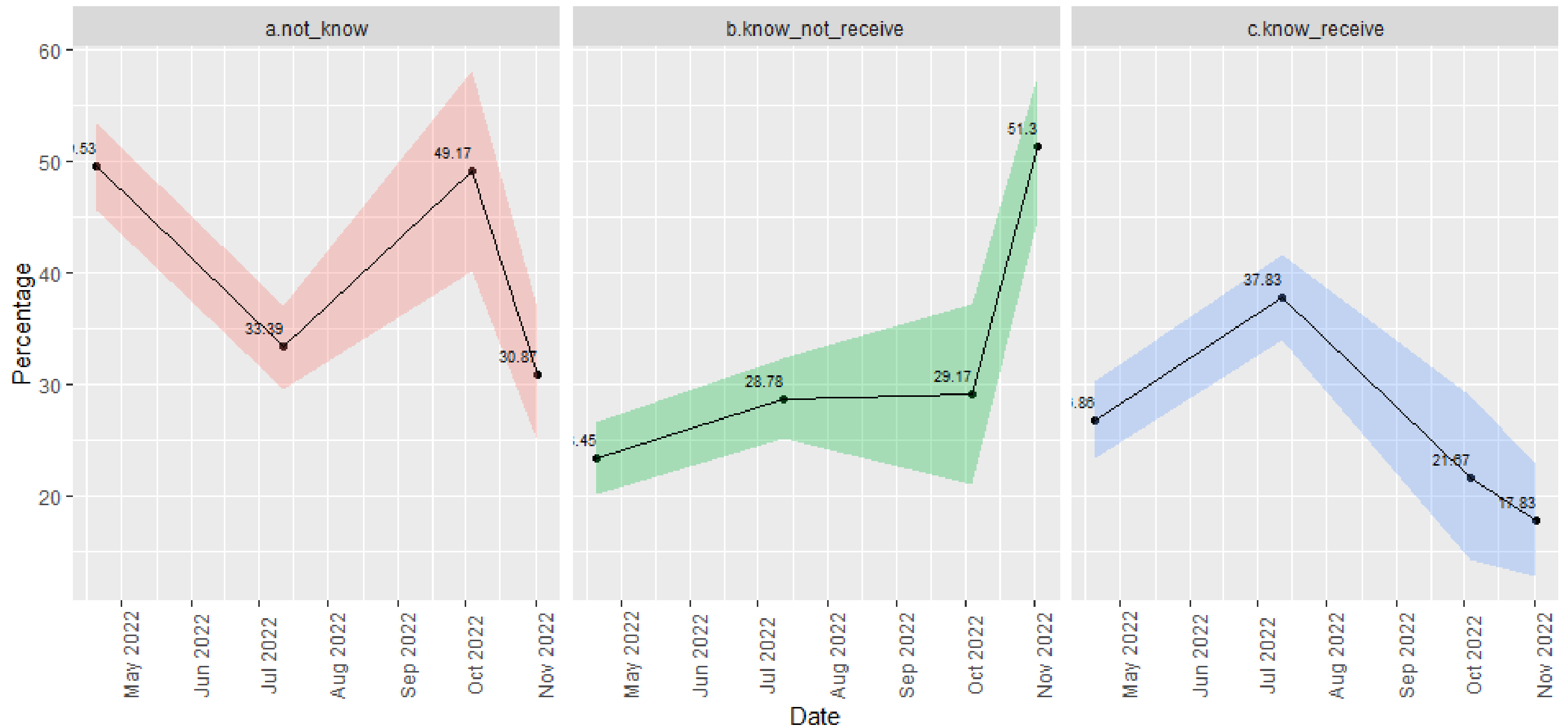


RAPID-FSK SURVEY: EARLY ON SERVICES

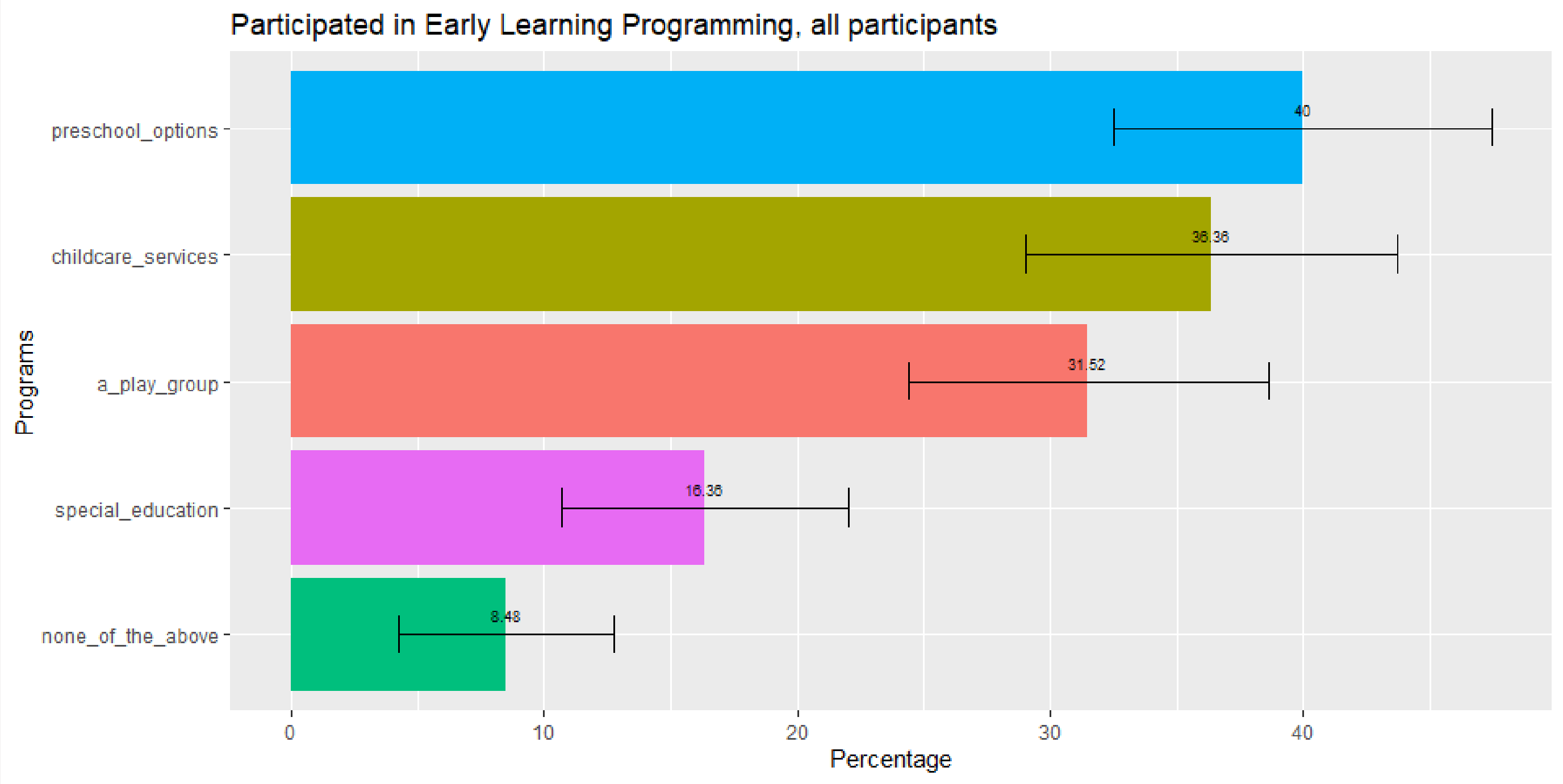


RAPID-FSK SURVEY: MI BRIDGES CHILDCARE SUBSIDY

Knowledge and Receiving MI Bridges Childcare Subsidy, All Participants

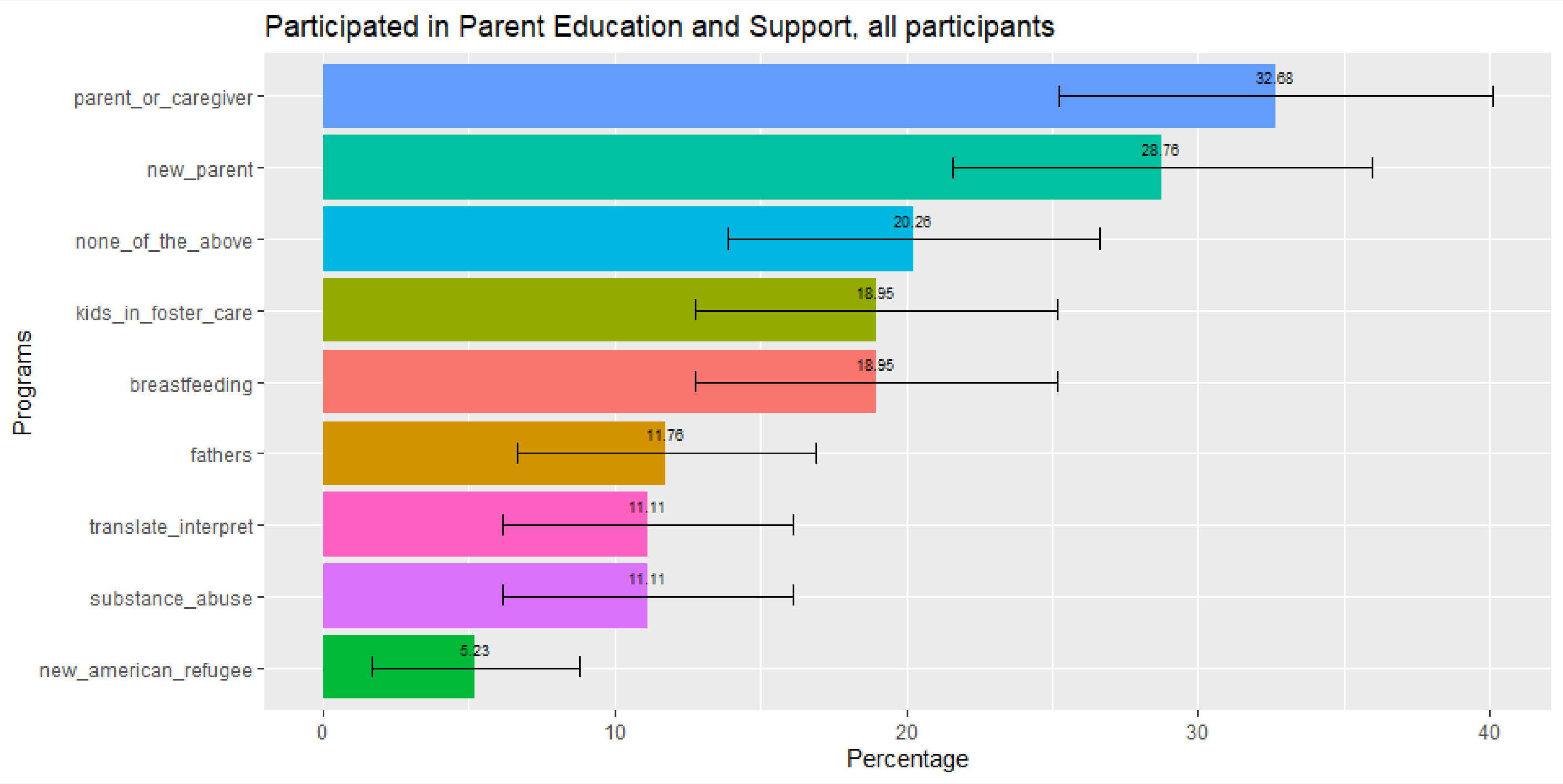


RAPID-FSK SURVEY: PARTICIPATING EARLY LEARNING PROGRAMMING PROGRAMS



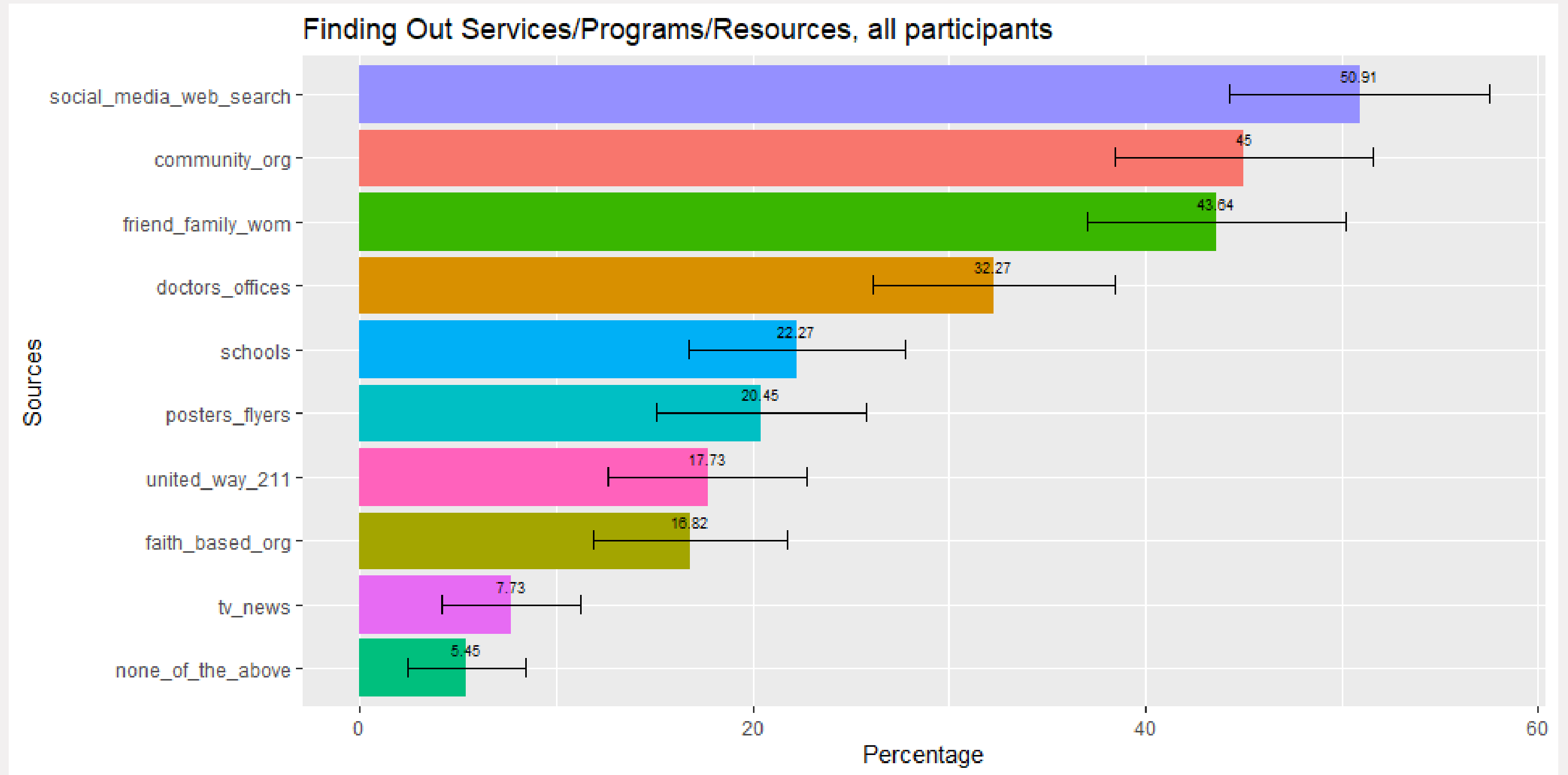
Note: Data only assessed in ongoing assessment 2 survey

RAPID-FSK SURVEY: PARTICIPATING PARENT EDUCATION & SUPPORT PROGRAMS



Note: Data only assessed in ongoing assessment 2 survey

RAPID-FSK SURVEY: HOW PARENTS FIND OUT ABOUT SERVICES



Note: Data only assessed in ongoing assessment 2 survey.

THANK YOU

Megan Streng

Communications Director

mstreng@firststepskent.org

Anthony Queen

Parent Leader

anthonyjqueen4040@hotmail.com

Cristi Carman

RAPID Program Manager

carmanc@stanford.edu

RAPID

Stanford
University

