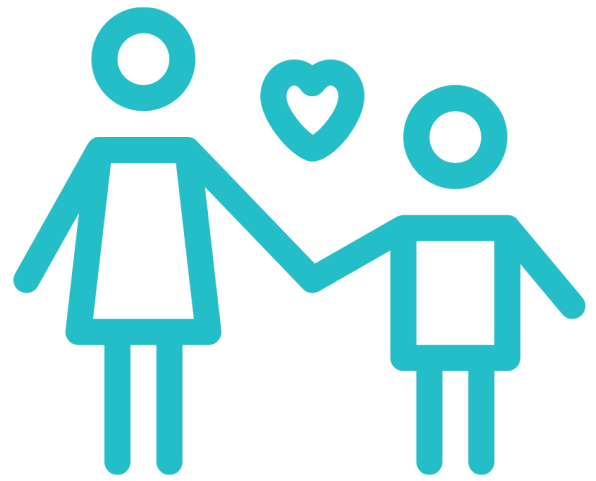


Health Screen Protocol

In order to prevent the spread of COVID-19, the following protocol is in place. Please do your part to keep children, families, and staff healthy.



Temperature Check:

- Child(ren) with a temperature of **100.4F or higher** cannot enter care.

Health Screening: Parent/Caregiver answers the following questions:

- Has your child been in **close contact with a person who has COVID-19?** (If **YES**, the child(ren) cannot enter care.
- Has your child **felt unwell in the last 3 days?** (cough, temperature, diarrhea, vomiting, shortness of breath?)
 - **If YES**, the child(ren) cannot enter care.
 - **If NO**, the child(ren) will be **checked for other signs of illness**, such as flushed cheeks, tiredness, and extreme fussiness.

COVID-19 Testing:

If a child is sick, they should go to their medical provider and **get tested for COVID-19.**

1. If the **child tests negative** for COVID-19, they **must be symptom-free for 24 hours** prior to returning to care.
2. If a **child tests positive** for COVID-19, the **child can return to care when he/she has been fever-free for 72 hours** without taking any fever-reducing medicine (i.e. Tylenol) **AND** other symptoms are improving (such as shortness of breath) **AND** at least 10 days have passed since symptoms first appeared.

If a child was in **close contact** with someone who has tested positive for COVID-19

1. The child **must quarantine** for 14 days beginning on the last day of possible exposure.
2. If a household member was the close contact, the household member **must be fever-free for 72 hours** without taking any fever-reducing medicine, **AND** other symptoms are improving **AND** at least **10 days have passed** since symptoms first appeared **before the child can start the 14 days of quarantine** to monitor for symptoms.
3. If they **do not develop symptoms** in these 14 days, they can return to care.

If your child's doctor has released your child to be in child care.

Documentation should be submitted to the provider for your child's record.

For any COVID-19 related questions call 888-535-6136

Health Screen Protocol

Please post this Health Screen poster where parents/families can see it. It helps parents/families know and understand the protocol.

The Kent Child Care Crisis Response Team urges all families to review the Center for Disease Control (CDC) and Kent County Health Department websites for the most up-to-date information.

You can also email **Joann Hoganson** directly with any questions related to health and safety in the child care setting or call the Michigan Department of Health and Human Services COVID-19 Hotline at **888.535.6136**.

- *CDC: <https://www.cdc.gov/coronavirus/2019-ncov/community/schools-childcare/index.html>*
- *Kent County Health Department: <https://www.accesskent.com/Health/coronavirus.htm>*
- *Joann Hoganson: joann.hoganson@kentcountymi.gov*

Thanks for being essential, Kent Child Care Crisis Response Team



Funding from the office of Great Start within the Michigan Department of Education supports the implementation of Great Start.